

EXHIBIT

8

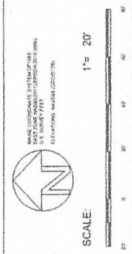
NOTES

1. THIS SURVEY IS CONDUCTED IN ACCORDANCE WITH THE MAINE SURVEYING ACT AND THE MAINE PROFESSIONAL LAND SURVEYING BOARD REGULATIONS.

2. THE SURVEYOR'S OFFICE IS LOCATED AT 100 NORTH STREET, PORTLAND, MAINE 04101.

3. THE SURVEYOR HAS CONDUCTED A VISUAL INSPECTION OF THE SITE AND HAS FOUND IT TO BE IN ACCORDANCE WITH THE SURVEYING ACT AND THE MAINE PROFESSIONAL LAND SURVEYING BOARD REGULATIONS.

4. THE SURVEYOR HAS CONDUCTED A VISUAL INSPECTION OF THE SITE AND HAS FOUND IT TO BE IN ACCORDANCE WITH THE SURVEYING ACT AND THE MAINE PROFESSIONAL LAND SURVEYING BOARD REGULATIONS.



SURVEY STANDARD

THIS SURVEY WAS CONDUCTED IN ACCORDANCE WITH THE SURVEYING ACT AND THE MAINE PROFESSIONAL LAND SURVEYING BOARD REGULATIONS.

Richard Eckrotte
 PROFESSIONAL LAND SURVEYOR NO. 2335

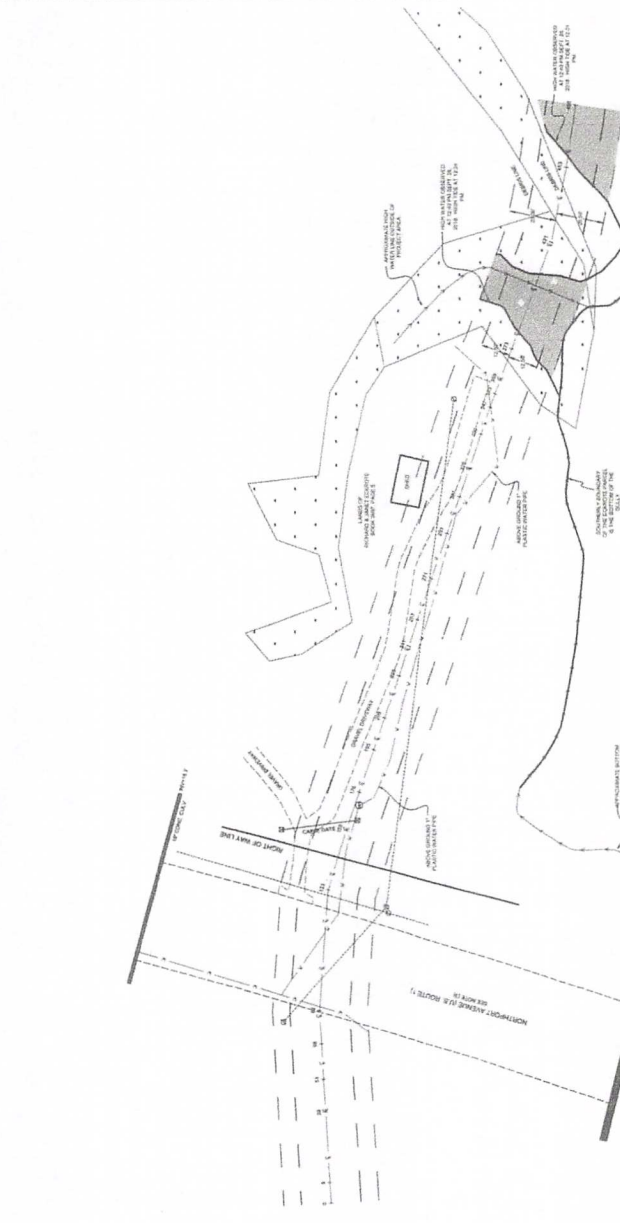
- LEGEND**
- ADJUSTED HORIZONTAL DISTANCE
 - ADJUSTED VERTICAL DISTANCE
 - ADJUSTED BEARING
 - ADJUSTED LENGTH
 - ADJUSTED AREA
 - ADJUSTED PERIMETER
 - ADJUSTED VOLUME
 - ADJUSTED WEIGHT
 - ADJUSTED MASS
 - ADJUSTED FORCE
 - ADJUSTED PRESSURE
 - ADJUSTED ENERGY
 - ADJUSTED POWER
 - ADJUSTED TORQUE
 - ADJUSTED MOMENT
 - ADJUSTED IMPULSE
 - ADJUSTED FLUX
 - ADJUSTED CURRENT
 - ADJUSTED VOLTAGE
 - ADJUSTED RESISTANCE
 - ADJUSTED CAPACITANCE
 - ADJUSTED INDUCTANCE
 - ADJUSTED FREQUENCY
 - ADJUSTED PERIOD
 - ADJUSTED PHASE
 - ADJUSTED AMPLITUDE
 - ADJUSTED VELOCITY
 - ADJUSTED ACCELERATION
 - ADJUSTED DECELERATION
 - ADJUSTED FORCE PER UNIT AREA
 - ADJUSTED FORCE PER UNIT VOLUME
 - ADJUSTED FORCE PER UNIT LENGTH
 - ADJUSTED FORCE PER UNIT MASS
 - ADJUSTED FORCE PER UNIT TEMPERATURE
 - ADJUSTED FORCE PER UNIT PRESSURE
 - ADJUSTED FORCE PER UNIT ENERGY
 - ADJUSTED FORCE PER UNIT POWER
 - ADJUSTED FORCE PER UNIT TORQUE
 - ADJUSTED FORCE PER UNIT MOMENT
 - ADJUSTED FORCE PER UNIT IMPULSE
 - ADJUSTED FORCE PER UNIT FLUX
 - ADJUSTED FORCE PER UNIT CURRENT
 - ADJUSTED FORCE PER UNIT VOLTAGE
 - ADJUSTED FORCE PER UNIT RESISTANCE
 - ADJUSTED FORCE PER UNIT CAPACITANCE
 - ADJUSTED FORCE PER UNIT INDUCTANCE
 - ADJUSTED FORCE PER UNIT FREQUENCY
 - ADJUSTED FORCE PER UNIT PERIOD
 - ADJUSTED FORCE PER UNIT PHASE
 - ADJUSTED FORCE PER UNIT AMPLITUDE
 - ADJUSTED FORCE PER UNIT VELOCITY
 - ADJUSTED FORCE PER UNIT ACCELERATION
 - ADJUSTED FORCE PER UNIT DECELERATION
 - ADJUSTED FORCE PER UNIT FORCE PER UNIT AREA
 - ADJUSTED FORCE PER UNIT FORCE PER UNIT VOLUME
 - ADJUSTED FORCE PER UNIT FORCE PER UNIT LENGTH
 - ADJUSTED FORCE PER UNIT FORCE PER UNIT MASS
 - ADJUSTED FORCE PER UNIT FORCE PER UNIT TEMPERATURE
 - ADJUSTED FORCE PER UNIT FORCE PER UNIT PRESSURE
 - ADJUSTED FORCE PER UNIT FORCE PER UNIT ENERGY
 - ADJUSTED FORCE PER UNIT FORCE PER UNIT POWER
 - ADJUSTED FORCE PER UNIT FORCE PER UNIT TORQUE
 - ADJUSTED FORCE PER UNIT FORCE PER UNIT MOMENT
 - ADJUSTED FORCE PER UNIT FORCE PER UNIT IMPULSE
 - ADJUSTED FORCE PER UNIT FORCE PER UNIT FLUX
 - ADJUSTED FORCE PER UNIT FORCE PER UNIT CURRENT
 - ADJUSTED FORCE PER UNIT FORCE PER UNIT VOLTAGE
 - ADJUSTED FORCE PER UNIT FORCE PER UNIT RESISTANCE
 - ADJUSTED FORCE PER UNIT FORCE PER UNIT CAPACITANCE
 - ADJUSTED FORCE PER UNIT FORCE PER UNIT INDUCTANCE
 - ADJUSTED FORCE PER UNIT FORCE PER UNIT FREQUENCY
 - ADJUSTED FORCE PER UNIT FORCE PER UNIT PERIOD
 - ADJUSTED FORCE PER UNIT FORCE PER UNIT PHASE
 - ADJUSTED FORCE PER UNIT FORCE PER UNIT AMPLITUDE

TOPOGRAPHIC SURVEY

RICHARD & JANET ECKROTTE
 242 NORTHPORT AVENUE, BELFAST, MAINE
 04915

NORDIC AQUARMS
 AND
BANSON

GOOD DEEDS	DRAWING SHEET
DATE OF SURVEY: 10/15/2018	SCALE: 1" = 20'
PROJECT: 100 NORTH STREET, PORTLAND, MAINE	SHEET: 1 of 1



NOTED: THE SURVEYOR HAS CONDUCTED A VISUAL INSPECTION OF THE SITE AND HAS FOUND IT TO BE IN ACCORDANCE WITH THE SURVEYING ACT AND THE MAINE PROFESSIONAL LAND SURVEYING BOARD REGULATIONS.

ADJUSTED HORIZONTAL DISTANCE: 12.34 FEET
 ADJUSTED VERTICAL DISTANCE: 3.21 FEET
 ADJUSTED BEARING: S 89° 12' 34" E
 ADJUSTED LENGTH: 12.34 FEET
 ADJUSTED AREA: 12.34 SQ. FT.
 ADJUSTED PERIMETER: 12.34 FEET
 ADJUSTED VOLUME: 12.34 CU. FT.
 ADJUSTED WEIGHT: 12.34 LB.
 ADJUSTED MASS: 12.34 KG.
 ADJUSTED FORCE: 12.34 LB.
 ADJUSTED PRESSURE: 12.34 PSI.
 ADJUSTED ENERGY: 12.34 BTU.
 ADJUSTED POWER: 12.34 W.
 ADJUSTED TORQUE: 12.34 FT-LB.
 ADJUSTED MOMENT: 12.34 FT-LB.
 ADJUSTED IMPULSE: 12.34 LB-SEC.
 ADJUSTED FLUX: 12.34 LB/HR.
 ADJUSTED CURRENT: 12.34 AMP.
 ADJUSTED VOLTAGE: 12.34 VOLTS.
 ADJUSTED RESISTANCE: 12.34 OHMS.
 ADJUSTED CAPACITANCE: 12.34 FARADS.
 ADJUSTED INDUCTANCE: 12.34 HENRYS.
 ADJUSTED FREQUENCY: 12.34 HZ.
 ADJUSTED PERIOD: 12.34 SEC.
 ADJUSTED PHASE: 12.34 DEG.
 ADJUSTED AMPLITUDE: 12.34 FT.

TEXT FROM 4-2-2018 GOOD DEEDS SURVEY

SHADED AREA DEPICTS LANDS LOCATED BELOW THE HIGH TIDE LINE.
THE DEED FROM THE ESTATE OF PHYLLIS J. POOR TO RICHARD AND
JANET ECKROTE DATED OCTOBER 15, 2012, AND RECORDED IN BOOK
3697. PAGE 5 CONTAINS THE LANGUAGE. "...THENCE GENERALLY
SOUTHWESTERLY ALONG SAID (PENOBSCOT) BAY A DISTANCE OF FOUR
HUNDRED TWENTY-FIVE (425) FEET....

THE PREVIOUS DEED FROM WILLIAM O. AND PHYLLIS J. POOR TO
PHYLLIS J. POOR DATED JULY 1, 1991, RECORDED IN BOOK 1228, PAGE
346 CONTAINS THE LANGUAGE,THENCE EASTERLY AND
NORTHEASTERLY ALONG HIGH-WATER MARK OF PENOBSCOT BAY FOUR
HUNDRED TEN (410) FEET....

I SUGGEST A LEGAL OPINION OF THE ABILITY OF THE ESTATE OF
PHYLLIS J. POOR TO GRANT AN EASEMENT BELOW THE HIGH WATER
MARK.

RULE 80B STAY MOTION EXHIBIT INDEX

Exhibits:

- 1 January 18, 2019 Letter from the Bureau to NAF re: Insufficient RTI
- 2 January 22, 2019 Letter from DEP to NAF re: Insufficient TRI
- 3 August 6, 2018 Easement Purchase and Sale Agreement between NAF and Richard and Janet Eckrote
- 4 March 3, 2019 Letter Agreement with Transmitting Emails from Counsel
- 5 April 9, 2019 Completeness Notice from the Bureau
- 6 June 13, 2019 Completeness Determination by DEP
- 7 December 23, 2019 Amendment to the NAF-Eckrote Easement Purchase and Sale Agreement
- 8 April 2, 2018 Good Deeds survey by Clark Staples, P.L.S., commissioned by NAF
- 9 August 31, 2012 Good Deeds survey, commissioned by the Eckrotes and incorporated by reference in the Eckrotes deed from the Estate of Phyllis J. Poor (Schedule A) (WCRD Book 3697, Page 5)